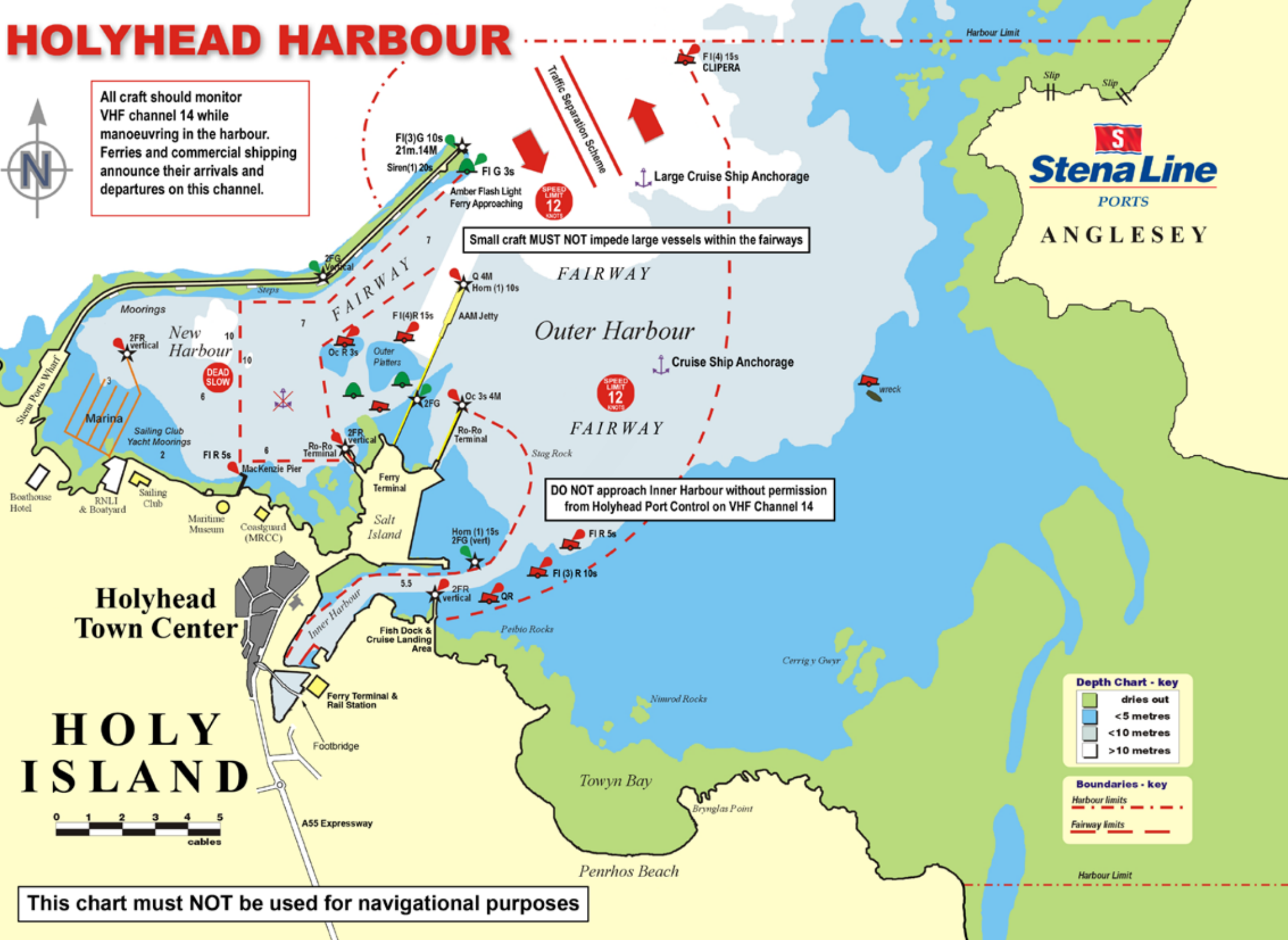


# HOLYHEAD HARBOUR



All craft should monitor VHF channel 14 while manoeuvring in the harbour. Ferries and commercial shipping announce their arrivals and departures on this channel.



**Stena Line**  
PORTS  
ANGLESEY

Small craft MUST NOT impede large vessels within the fairways

DO NOT approach Inner Harbour without permission from Holyhead Port Control on VHF Channel 14

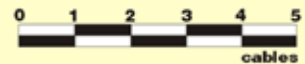
**Depth Chart - key**

Green	dries out
Light Blue	< 5 metres
Dark Blue	< 10 metres
White	> 10 metres

**Boundaries - key**

Red dashed line	Harbour limits
Red solid line	Fairway limits

## HOLY ISLAND



This chart must NOT be used for navigational purposes